

Operating Temperature(°C)

PVC 0 ~ 50



13, 15A

# ESLON MINI BALL VALVE

6A

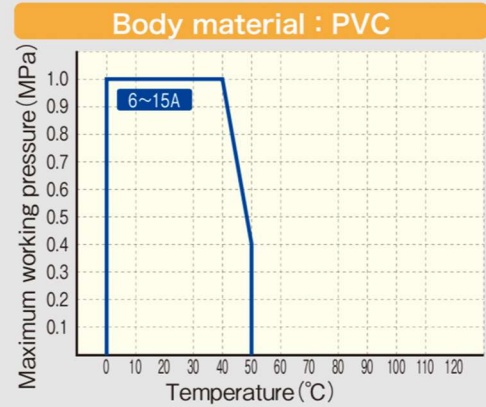
## Feature

- Low stem torque and reliable sealing performance.
- Position indicator at handle enable easier flow rate regulation.
- Five types of end connections and their combination of both end connection available.

## ⚠ Important Notes

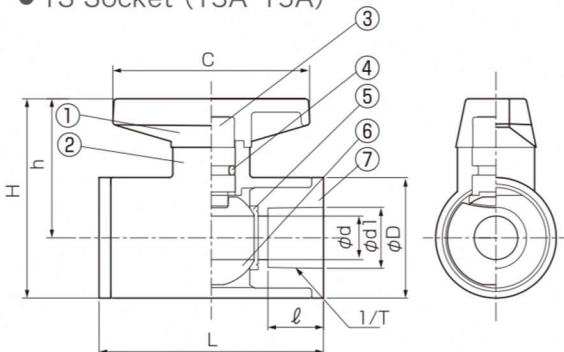
- Gasifying, volatile, or evaporating fluid such as hydrogen peroxide and sodium hypochlorite might rise inner pressure of valve and burst the valve. Please contact us concerning such risk.
- Fluid containing slurry, solid, sediment, or crystallized fluid might disable sealing.

## Maximum Working Pressure - Temperature Rating

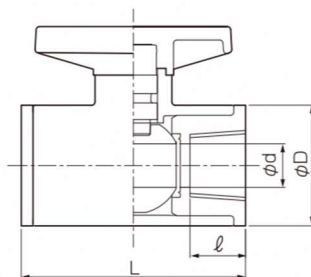


## Figure, Parts List, Size (TS Socket Type and Thread Type, 13A · 15A)

### ● TS Socket (13A·15A)



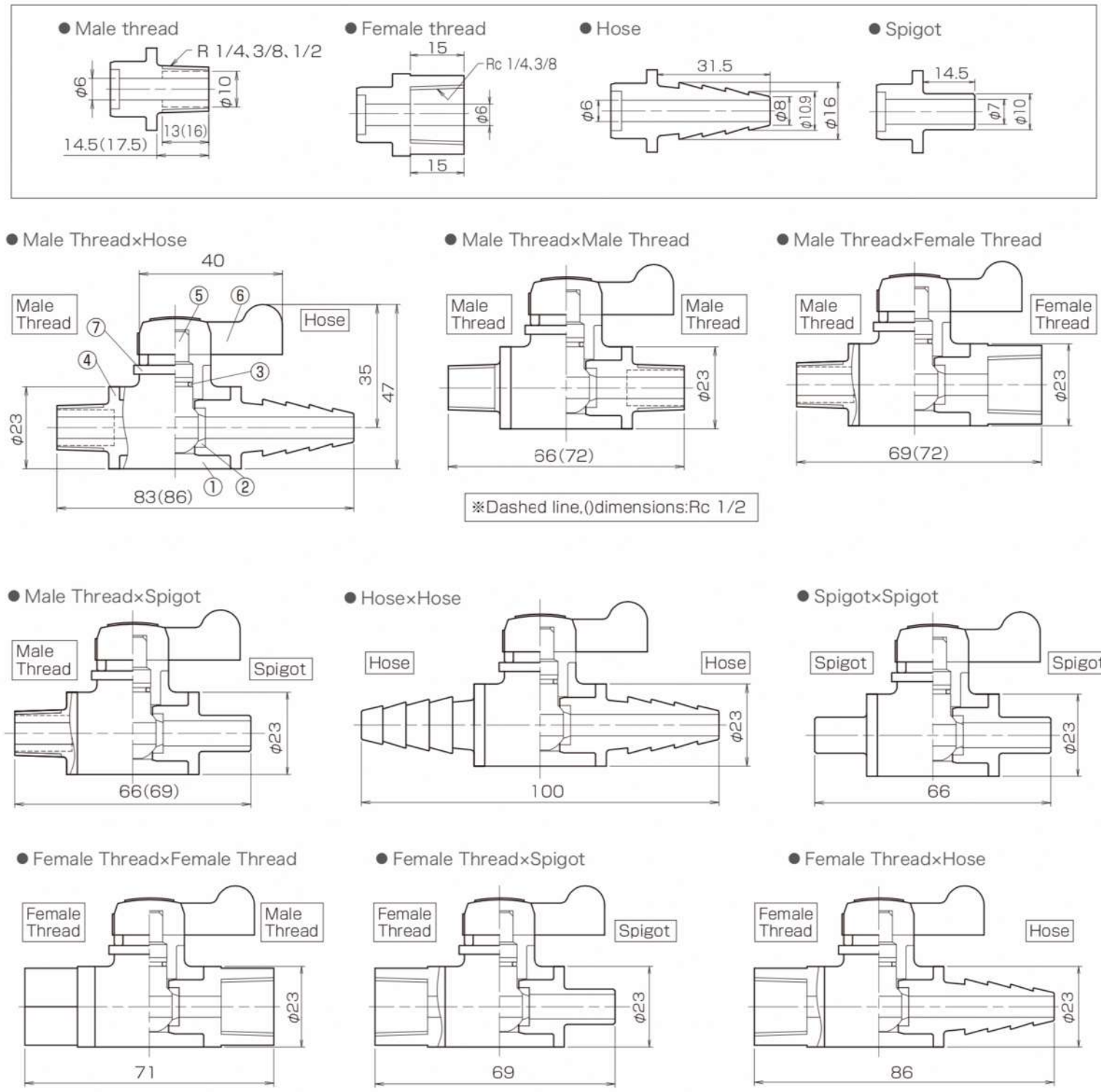
### ● Thread (15A)



### (13A, 15A)

No.	Part Name	QTY	Material
1	Handle	1	ABS
2	Body	1	PVC
3	Stem	1	PVC
4	O-Ring	1	● EPDM ● FKM
5	Ball Seat	2	PTFE
6	Ball	1	PVC
7	Socket	2	PVC

Figure (6A)



※Dashed line,()dimensions:Rc 1/2

Parts List

(6A)

No.	Part Name	Q'TY	Material
1	Body	1	PVC
2	Ball Seat	2	● EPDM ● FKM
3	O-ring	1	● EPDM ● FKM
4	Socket	1	PVC
5	Ball	1	PVC
6	Handle	1	ABS
7	Stem Stopper	1	PVC

Combination of End Connection, Weight

Size	Part Name	Weight(g/unit)
6A	Male Thread x Male Thread	30
	Male Thread x Female Thread	40
	Male Thread x Hose	40
	Male Thread x Spigot	30
	Female Thread x Female Thread	40
	Female Thread x Hose	40
	Female Thread x Spigot	40
	Hose x Hose	40
	Spigot x Spigot	30