

TRUE UNION BALL VALVE (UPVC CPVC PPH)

Product overview

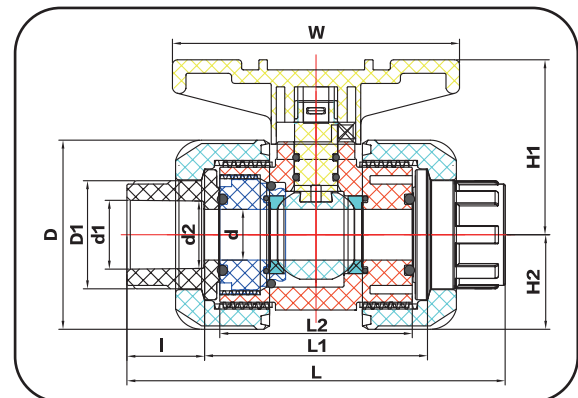
Our True Union Ball Valves are born by our long-term experience, with small & stable torque, long life-span, and no requirement for flow direction.

Characteristics

- Matt surface of lever provides good holding feel; Produced by PP Advanced Material is suitable for critical environment.
- EPDM Seal with superior anti-corrosive performance; FKM Seal is optional with more excellent performance.
- PTFE Seat is specially designed so that friction with ball is reduced.
- Balls are lathed and grinded to ensure roundness and provide reliable seal effect as well as smooth open action.
- NC lathe works are adapted on all critical dimensions to ensure tight matching.
- Socket End/Threaded End/Flange connections & PE/PPH socket are available.

Application

Industrial: Metal-Plating, Etching, PCB Equipment, Semi-Conductor Equipment; Fluid Flow Transfer, Sewage Water Treatment, Desalination, Agriculture, Swimming Pool, etc.



Parameters

Size: 1/2 " (DN15) ~ 4 " (DN100)

Socket: DIN/ANSI/JIS/CNS

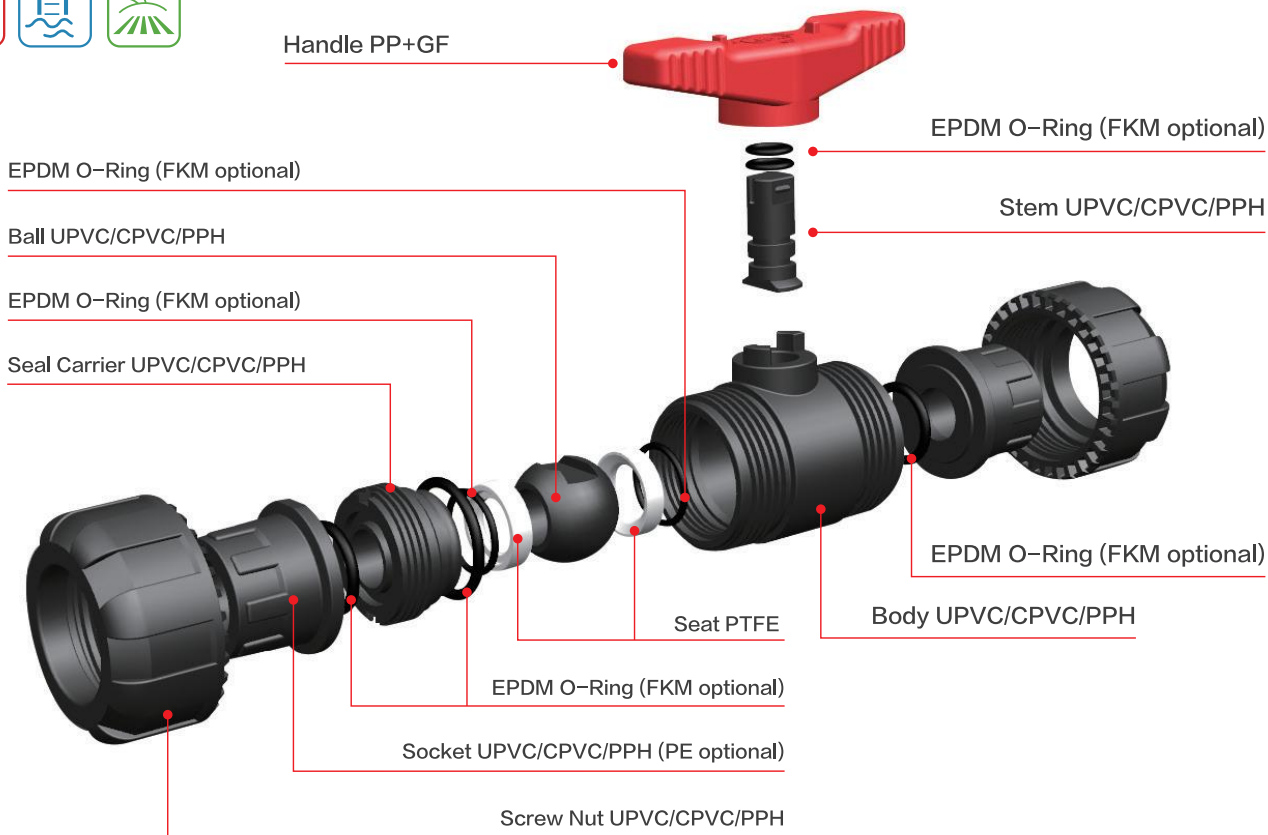
Thread: PT/NPT/BSPT

Pressure Rating: 1/2 " (DN15)-2 " (DN50) PN16 2-1/2 " (DN65)-4 " (DN100) PN10

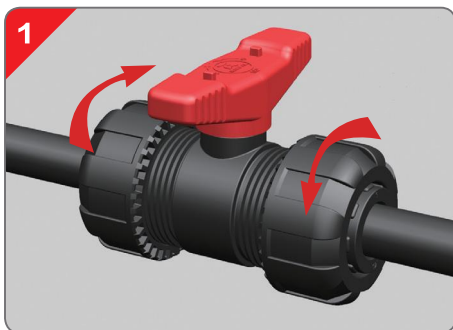
NIT: MM

| SIZE | d | d1 | | | | | d2 | | | | |
|-------------|----|-----------|--------|--------|--------|--------|-----------|--------|--------|--------|--------|
| | | UPVC/CPVC | | | | PPH | UPVC/CPVC | | | | PPH |
| | | DIN | JIS | ANSI | CNS | DIN | DIN | JIS | ANSI | CNS | DIN |
| 1/2" (15) | 15 | 20.25 | 22.30 | 21.40 | 22.40 | 19.20 | 20.05 | 21.85 | 21.25 | 21.90 | 19.00 |
| 3/4"(20) | 20 | 25.25 | 26.30 | 26.75 | 26.40 | 24.20 | 25.05 | 25.85 | 26.58 | 25.90 | 23.80 |
| 1"(25) | 25 | 32.25 | 32.33 | 33.52 | 34.50 | 31.10 | 32.05 | 31.85 | 33.28 | 33.90 | 30.70 |
| 1-1/4"(32) | 32 | 40.25 | 38.43 | 42.28 | 42.50 | 39.00 | 40.05 | 37.85 | 42.05 | 41.90 | 38.60 |
| 1-1/2"(40) | 40 | 50.25 | 48.46 | 48.40 | 48.60 | 48.90 | 50.05 | 47.75 | 48.12 | 47.90 | 48.60 |
| 2"(50) | 50 | 63.25 | 60.56 | 60.45 | 60.60 | 61.90 | 63.05 | 59.75 | 60.18 | 59.90 | 61.40 |
| 2-1/2"(65) | 63 | 75.25 | 76.60 | 73.30 | 76.70 | 73.60 | 75.05 | 75.87 | 72.85 | 75.90 | 72.30 |
| 3"(80) | 75 | 90.35 | 89.60 | 89.25 | 89.70 | 88.30 | 90.05 | 88.83 | 88.70 | 88.90 | 86.90 |
| 4"(100) | 90 | 110.35 | 114.70 | 114.60 | 115.00 | 108.00 | 110.05 | 113.98 | 114.10 | 113.80 | 106.40 |

| SIZE | D | L | I | L1 | L2 | W | H1 | H2 | Operating torque(N.M) |
|-------------|--------|--------|-------|--------|--------|--------|--------|-------|-----------------------|
| 1/2" (15) | 56.00 | 112.00 | 23.00 | 66.00 | 57.00 | 85.00 | 51.80 | 28.00 | 2.0 |
| 3/4"(20) | 65.00 | 120.00 | 26.00 | 68.00 | 59.00 | 90.00 | 61.00 | 32.50 | 2.5 |
| 1"(25) | 76.00 | 136.00 | 29.00 | 76.00 | 68.00 | 106.00 | 69.30 | 38.00 | 3.0 |
| 1-1/4"(32) | 87.00 | 150.50 | 32.50 | 85.00 | 76.00 | 116.00 | 80.80 | 43.50 | 3.5 |
| 1-1/2"(40) | 101.00 | 168.00 | 35.50 | 95.50 | 86.50 | 128.00 | 92.00 | 50.50 | 4.5 |
| 2"(50) | 121.00 | 180.00 | 38.50 | 103.00 | 92.00 | 155.00 | 108.00 | 60.60 | 5.5 |
| 2-1/2"(65) | 150.00 | 235.00 | 44.50 | 146.00 | 134.00 | 195.00 | 135.00 | 75.00 | 7.5 |
| 3"(80) | 169.50 | 265.00 | 51.00 | 163.00 | 148.00 | 215.00 | 150.50 | 85.00 | 8.5 |
| 4"(100) | 190.00 | 304.00 | 61.50 | 181.00 | 157.00 | 255.00 | 166.00 | 95.00 | 10.0 |



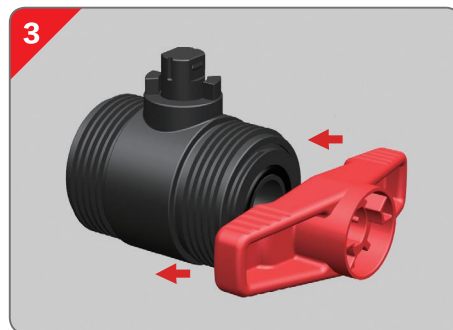
Assembly instructions



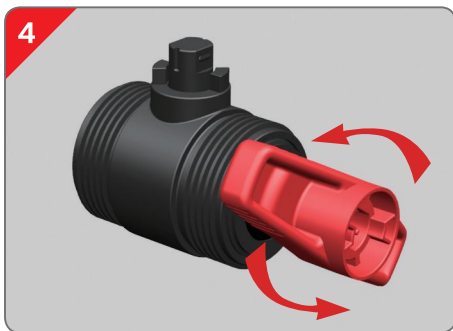
1 Turn the ball valve off, and loosen Screw Nuts by turning counter-clockwise.



2 Pull out the Handle as arrow indication.



3 Match the protrusions of Handle with the grooves on the Seal Carrier.



4 Tightening the Seat by turning the handle counter-clockwise (as shown by arrow)



5 Assemble the handle back to ball valve.



6 Turn back the Screw Nuts to finish installation.