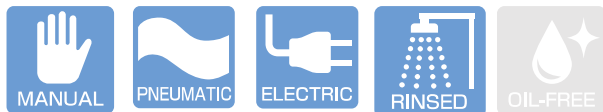




JIS ANSI/ASME DIN



Operating Temperature(°C)

PVC	0 ~ 50
PP	0 ~ 80
PVDF	0 ~ 120



ESLON BUTTERFLY VALVE LEVER TYPE

Feature

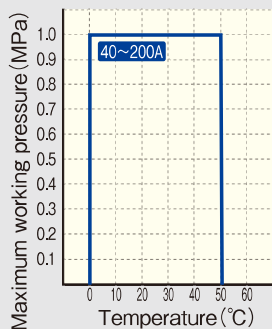
- Reliable sealing performance as spherical disc and preventive flange design against over-tightening.
- Changeable operating direction of lever handle into opposite even after installation.
- Exchangeable into gear type or automatic type by dismantling lever handle and indicator plate.
- Positioning pin for easy piping work (JIS10K)
- Controllable flow in 12 levels. Lockable lever type which has key hole available.

⚠ Important Notes

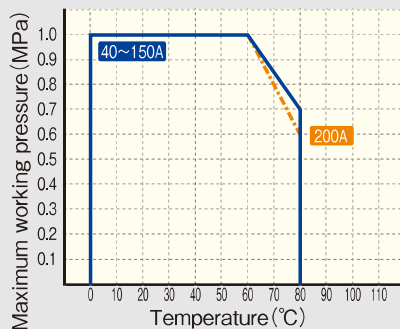
- Fluid containing slurry, solid, sediment, or crystallized fluid might disable sealing.

Maximum Working Pressure - Temperature Rating

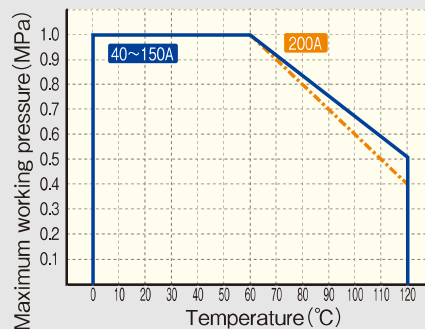
Body material : PVC



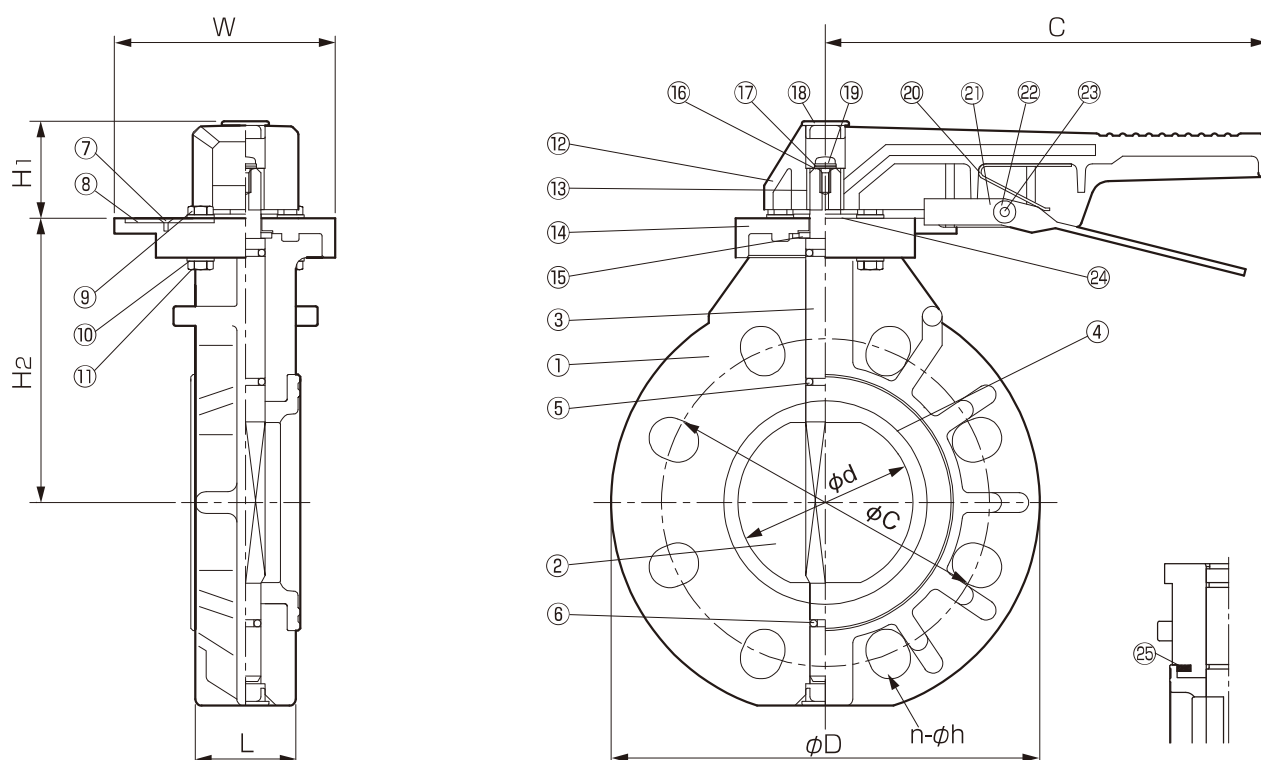
Body material : PP



Body material : PVDF



Figure



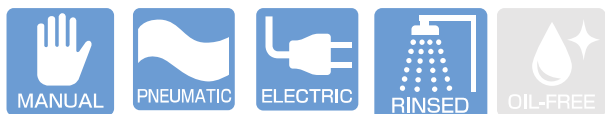
Parts List

No.	Part Name	QTY	Material	No.	Part Name	QTY	Material
1	Body	1	Body/Disc ● PVC/PP	12	Handle	1	ABS
2	Disc	1	● PP/PP ● PVDF/PVDF	13	Handle insert	1	SUS304
3	Shaft	1	● SUS420J2 ● SUS316	14	Indicator plate	1	PVC
4	Seat ring	1		15	Thrust ring	1	SUS304
5	O-Ring	2	● EPDM	16	Washer	1	SUS304
6	O-Ring	1	● FKM	17	Spring washer	1	SUS304
7	Tapping screw	3	SUS304	18	Cap	1	PP
8	Lock plate	1	SUS304	19	Machine screw	1	SUS304
9	Hexagonal bolt	2	SUS304	20	Flat spring	1	SUS304-CSP
10	Washer	4	SUS304	21	Lever	1	SUS304
11	Hexagonal nut	1	SUS304	22	Pin cover	1	PP
				23	Spring pin	1	SUS304
				24	Handle washer	1	PP
				25	Reinforced Ring (200A Body:PP)	2	S45C+Painting

Size

Size		d	L	H ₁	H ₂	C	W	D	Flange						Weight(kg/unit)		
A	B								ANSI				DIN		PVC	PP	PVDF
									phi C	n-phi h	phi C	n-phi h	phi C	n-phi h			
40	1 1/2	45	33	44	112	202	101	140	105	4-19	98.5	4-16	110	4-18	1.2	1.1	1.3
50	2	57	43	44	119	202	101	155	120	4-19	120.5	4-19	125	4-18	1.4	1.2	1.6
65	2 1/2	71	46	44	130	202	101	178	140	4-19	139.5	4-19	145	4-18	1.7	1.5	1.9
80	3	80	46	44	137	202	101	196	150	8-19	152.5	4-19	160	8-18	2.0	1.8	2.3
100	4	100	52	44	161	245	123	229	175	8-19	190.5	8-19	180	8-18	3.0	2.7	3.4
125	5	125	56	54	179	310	155	254	210	8-23	216.0	8-22	210	8-18	4.6	4.1	5.3
150	6	150	60	54	188	310	155	286	240	8-23	241.5	8-22	240	8-22	5.5	4.8	6.5
200	8	198	71	68	240	400	200	343	290	12-23	298.5	8-22	295	8-22	8.9	8.0	10.5

Unit : mm



Operating Temperature(°C)

PVC	0 ~ 50
PP	0 ~ 80
PVDF	0 ~ 120



40-300A



350-600A

ESLON BUTTERFLY VALVE GEAR TYPE

Feature

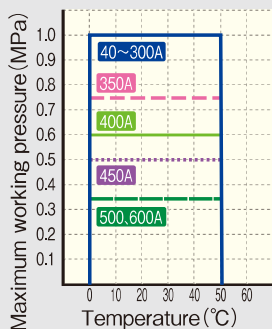
- Reliable sealing performance as spherical disc and preventive flange design against over-tightening.
- Changeable assembled direction of worm gear handle into opposite even after installation.
- Exchangeable into lever type or automatic type by dismounting worm gear.
- Positioning pin for easy piping work (JIS10K)
- Long Spindle Type, Chain Wheel Type, and Lockable handle type available.

⚠ Important Notes

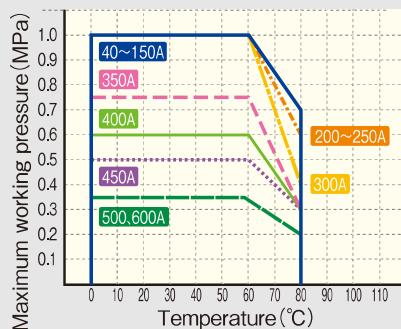
- Fluid containing slurry, solid, sediment, or crystallized fluid might disable sealing.

Maximum Working Pressure - Temperature Rating

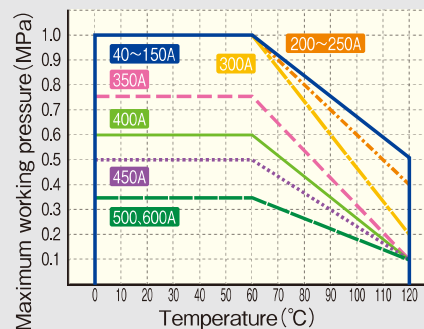
Body material : PVC



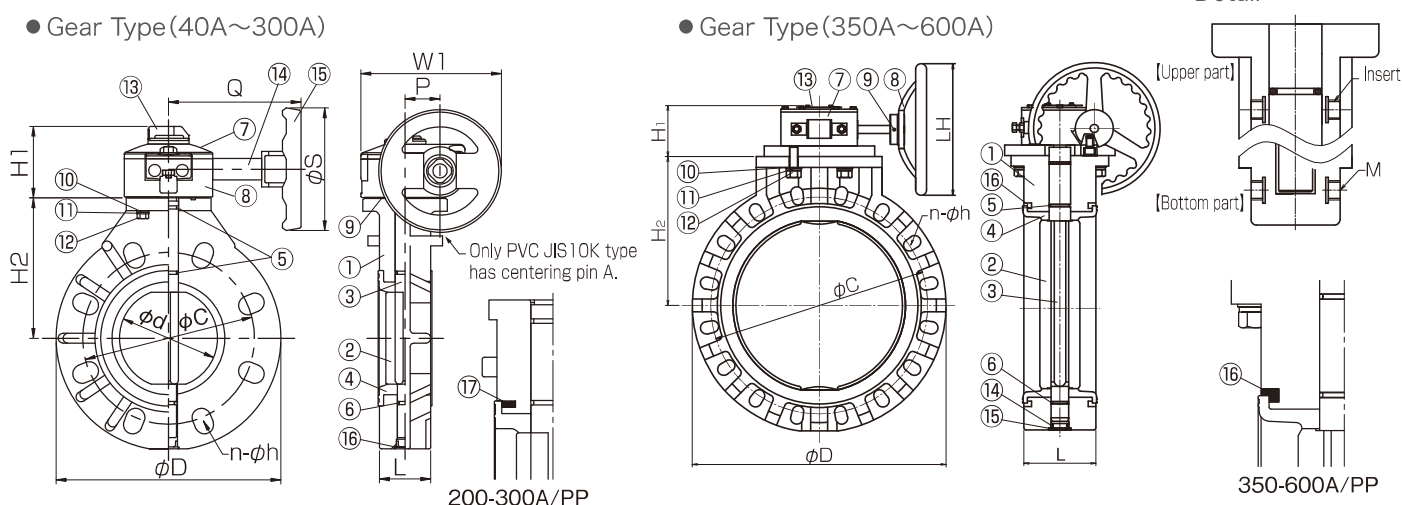
Body material : PP



Body material : PVDF



Figure



Parts List

Gear Type (40A ~ 300A)

No.	Part Name	QTY	Material	No.	Part Name	QTY	Material
1	Body	1	● PVC ● PP ● PVDF	9	Packing	1	EPDM
2	Disc	1	● PP ● PVDF	10	Washer	4	SUS304
3	Shaft	1	● SUS420J2 ● SUS316	11	Spring washer	1	SUS304
4	Seat Ring	1	● EPDM ● FKM	12	Hexagonal bolt	1	SUS304
5	O-Ring	2		13	Indicator	1	ABS
6	O-Ring	1		14	Shaft Cover	1	PVC
7	Housing Cover	1	GFPP	15	Handle	1	ABS
8	Housing	1	GFPP	16	Cap	1	PP
				17	Reinforced Ring (200-300A Body,PP)	2	S45C+Painting

Gear Type (350A ~ 600A)

No.	Part Name	QTY	Material	No.	Part Name	QTY	Material
1	Body	1	● PVC ● PP ● PVDF	9	Spring Pin	1	SUS304
2	Disc	1	● PP ● PVDF	10	Washer	4	SUS304
3	Shaft	1	● SUS420J2 ● SUS316	11	Spring Washer	4	SUS304
4	Seat Ring	1	● EPDM ● FKM	12	Hexagonal bolt	4	SUS304
5	O-Ring	2		13	Indicator	1	SUS304
6	O-Ring	1		14	O-Ring	1	EPDM
7	Gear Box	1	FC+Painting	15	Cap	1	PP
8	Handle	1	FC+Painting	16	Reinforced Ring (Body:PP)	2	S45C+Painting
				17	Insert (450-600A)	8	C3604

· For sea water application, the stem material must be SUS316.
Please contact us in advance.

Size

Gear Type (40A ~ 300A)

Size		L	ϕ D	Flange(JIS 10K)						H ₁	H ₂	W ₁	P	Q	ϕ S	Weight(kg/unit)		
A	B			JIS10K		ANSI		DIN								PVC	PP	PVDF
				ϕ C	n-ϕ h	ϕ C	n-ϕ h	ϕ C	n-ϕ h									
40	1 1/2	33	140	105	4-19	98.5	4-16	110	4-18	72	105	143	36	135	125	2.1	2.0	2.2
50	2	43	155	120	4-19	120.5	4-19	125	4-18	72	112	143	36	135	125	2.3	2.1	2.5
65	2 1/2	46	178	140	4-19	139.5	4-19	145	4-18	72	123	143	36	135	125	2.7	2.5	2.9
80	3	46	196	150	8-19	152.5	4-19	160	8-18	72	130	143	36	135	125	3.0	2.8	3.3
100	4	52	229	175	8-19	190.5	8-19	180	8-18	72	152	143	36	135	125	3.8	3.6	4.2
125	5	56	254	210	8-23	216.0	8-22	210	8-18	84	169	235	68	178	210	5.9	5.4	6.6
150	6	60	286	240	8-23	241.5	8-22	240	8-22	84	178	235	68	178	210	7.5	6.8	8.5
200	8	71	343	290	12-23	298.5	8-22	295	8-22	84	230	235	68	178	210	9.3	8.4	10.9
250	10	73	410	355	12-25	362.0	12-25	350	12-22	115	250	353	88	270	350	19.3	17.8	21.9
300	12	114	485	400	16-25	432.0	12-25	400	12-22	115	280	353	88	270	350	26.4	24.5	30.8

· Only PVC JIS10K type has centering pin A.
· Disc full-open/full close by 5 times of handle rotation for 40-100A, 10 times of handle rotation for 125-300A.
· Valve flange is universal type and bolt holes conform to JIS-10K, ANSI & DIN standards.

Gear Type (350A ~ 600A)

Size		L	ϕ D	H ₁	H ₂	LH	Flange									Weight(kg/unit)		
A	B						JIS10K			ANSI			DIN			PVC	PP	PVDF
							ϕ C	n-ϕ h	Insert	ϕ C	n-ϕ h	Insert	ϕ C	n-ϕ h	Insert			
350	14	129	535	105	325	310	445	16-25	—	476.2	12-29	—	460	16-22	—	39.0	37.0	51.3
400	16	169	597	130	350	310	510	16-27	—	540.0	16-29	—	515	16-26	—	46.4	44.5	61.0
450	18	179	635	155	370	310	565	20-27	M24	578.0	16-32	UNC1-1/8	565	20-26	M24	81.3	78.4	104.0
500	20	190	700	155	410	407	620	20-27	M24	635.0	20-32	UNC1-1/8	620	20-26	M24	98.1	95.0	125.0
600	24	209	815	155	465	407	730	24-33	M30	749.0	20-35	UNC1-1/4	725	20-30	M27	144.0	140.0	181.0

· Handle will be full-open/full close by 12.5 times for 350-400A, 16 times for 450-600A.
· Valve flange in sizes 350A & 400A is universal type and bolt holes conform to JIS-10K, ANSI & DIN standards.