



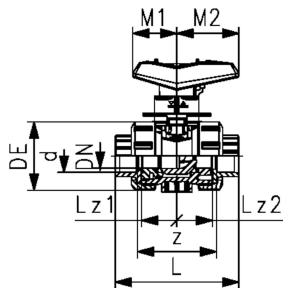
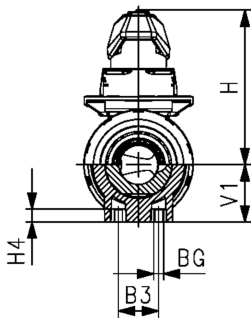
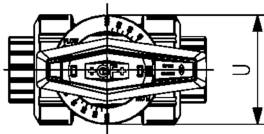
Linear ball valve type 546 Pro PVC-U
With solvent cement sockets metric

Model:

- Excellent control characteristics
- Designed for easy installation and removal
- Ball seat PTFE
- Angle of operation 90° with scale
- Integrated stainless steel mounting inserts
- Z-length, end connectors and union nuts compatible to Types 546 Linear/ 546 (Pro) and 542

Option:

- Individual configuration of the valve
- Pneumatic or electric actuators from GF
- Other materials on demand



d (mm)	Size (inch)	DN (mm)	PN (bar)	kv-value ($\Delta p=1$ bar) (L/min)	EPDM Code	SP	Weight (kg)	FKM Code	PF
20	½	15	10	90	161 546 951	1	0.156	161 546 961	2 31 546 801
25	¾	20	10	166	161 546 952	1	0.240	161 546 962	2 31 546 801
32	1	25	10	235	161 546 953	1	0.343	161 546 963	2 31 546 801
40	1 ¼	32	10	417	161 546 954	1	0.610	161 546 964	2 31 546 801
50	1 ½	40	10	626	161 546 955	1	0.838	161 546 965	2 31 546 801
63	2	50	10	781	161 546 956	1	1.537	161 546 966	2 31 546 801

d (mm)	M1 (mm)	M2 (mm)	Lz1 (mm)	Lz2 (mm)	L (mm)	V1 (mm)	H (mm)	Hmax (mm)	DE (mm)	BG (mm)	B3 (mm)	H4 (mm)	U (mm)	z (mm)
20	35	47	28.0	28.0	95	27	72	99	50	M6	25	12	59	64
25	44	62	32.5	32.5	110	30	91	121	58	M6	25	12	68	72
32	44	62	35.5	35.5	123	36	96	132	68	M6	25	12	68	79
40	57	74	42.5	42.5	146	44	116	160	84	M8	45	15	81	94
50	57	74	44.5	44.5	157	51	122	173	97	M8	45	15	81	95
63	66	86	50.5	50.5	183	64	141	205	124	M8	45	15	91	107

The technical data are not binding. They neither constitute expressly warranted characteristics nor guaranteed properties nor a guaranteed durability. They are subject to modification. Our General Terms of Sale apply.

Georg Fischer Piping Systems Ltd, Postfach, CH-8201 Schaffhausen/Switzerland Phone +41 -(0)52-631 1111 e-mail: info.ps@georgfischer.com Internet: <http://www.gfps.com>